

Quick Install Guide

BSF 20102-01

DEU

ENG

FRA

NDL

ITA

ESP



Warnung

Lebensgefahr durch elektrische Spannung!

Lesen Sie die Bedienungsanleitung, vor Beginn der Installationsarbeiten.

Alle Installationsarbeiten sind in spannungsfreiem Zustand durchzuführen.

Warning

Electrical voltage! Danger to life!

Read operating manual before starting installation work.

All installation work must be performed under the absence of voltage.

Avertissement

Danger de mort par tension électrique!

Lisez le manuel d'utilisation avant de commencer les travaux d'installation.

Tous les travaux d'installation doivent être exécutés en l'absence de tension.

Waarschuwing

Levensgevaar door elektrische spanning

Lees de instructies voordat u begint met de installatie.

Alle installatiewerkzaamheden dienen uitgevoerd te worden in spanningsvrije toestand.

Avvertenza

Pericolo di morte dovuto alla presenza di tensione elettrica

Leggere attentamente le istruzioni prima di iniziare il lavoro di installazione.

Tutte le operazioni di installazione devono essere eseguite in assenza di tensione.

Peligro

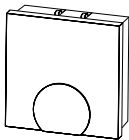
Peligro de muerte por tensión eléctrica.

Lea las instrucciones de servicio antes de empezar los trabajos de instalación.

Todos los trabajos se tienen que realizar sin tensión.

► Lieferumfang / Scope of supply / Etendue de fourniture / Leveringsomvang / Volume di fornitura / Contenido del envío

1 x



3 x



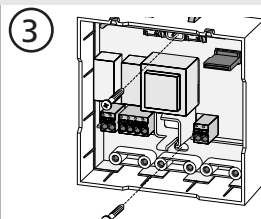
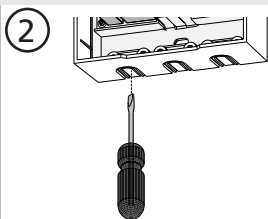
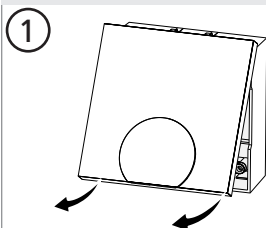
1 x*



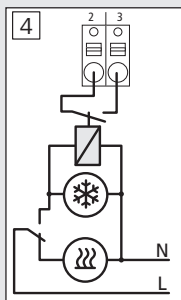
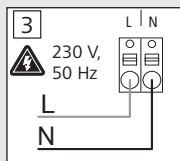
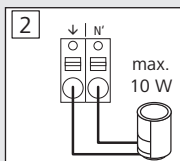
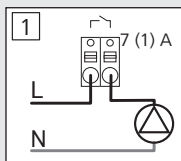
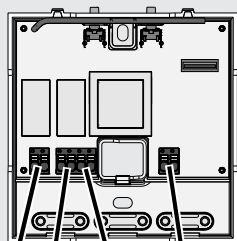
* optional / en option / optioneel / opzionale / opcional



BSF 20102



Elektrischer Anschluss / Electric connection / Branchement électrique / Elektrische aansluiting / Collegamento elettrico / Conexión eléctrica



Massive Leitung Solid wire Conducteur massif Massieve leiding Conduttore pieno Cable macizo	0.5 - 1.5 mm ²	<p>9.9 mm</p>
Flexible Leitung Flexible wire Conducteur flexible Flexibele leiding Conduttore flessibile Cable flexible	1.0 - 1.5 mm ²	

DEU

ENG

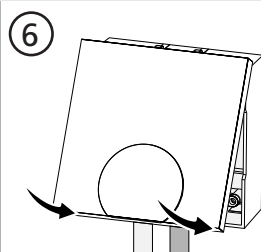
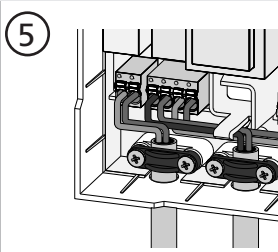
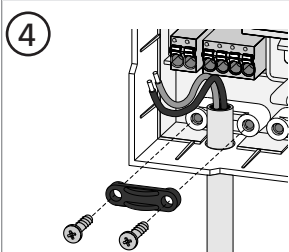
FRA

NDL

ITA

ESP

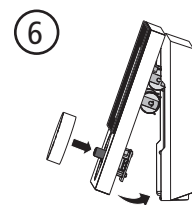
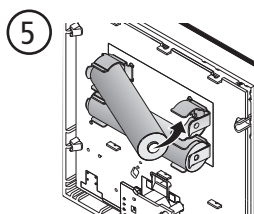
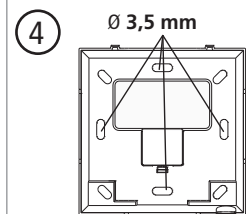
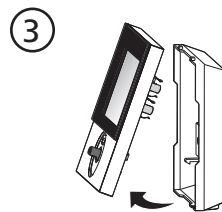
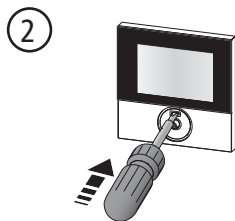
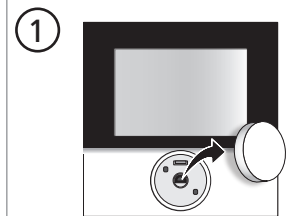
	DEU	ENG	FRA	NDL	ITA	ESP
1	Pumpe	Pump	Pompe	Pomp	Pompa	Bomba
2	Stellantrieb	Actuator	Actuateur	Actuator	Attuatore	Actuador
3	Netzanschluss	Mains connection	Branchement secteur	Stroomnetaansluiting	Collegamento di rete	Conexión a la red
4	Change Over	Change over	Change-over	Change Over	Change Over	Change Over (conmutación)



► Installation / Installatie / Installazione / Instalación



RDF 642x2-00



DEU

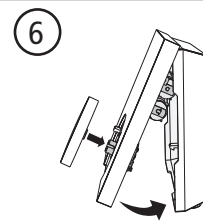
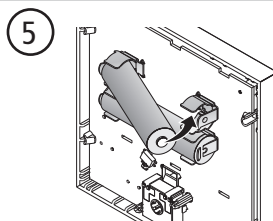
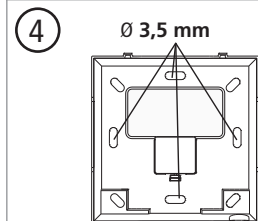
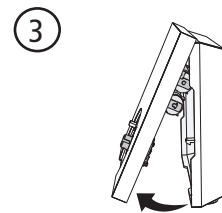
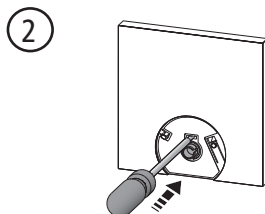
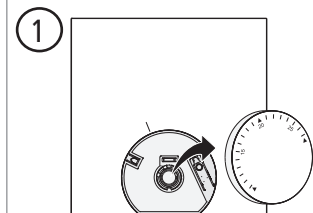
ENG

FRA

NLD

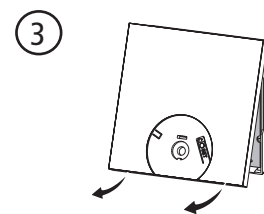
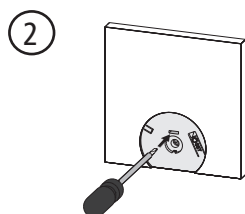
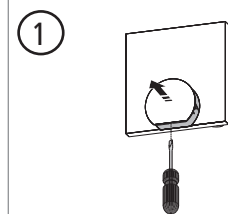
ITA

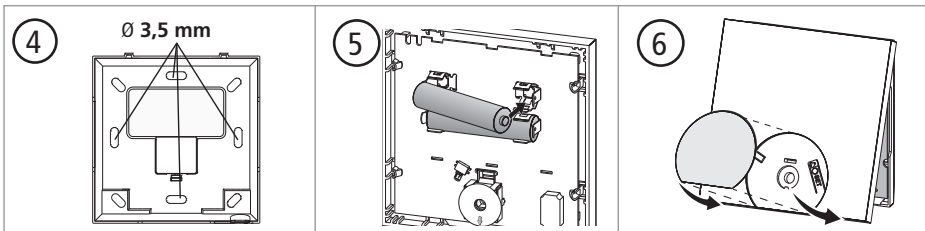
RF 642x2-22



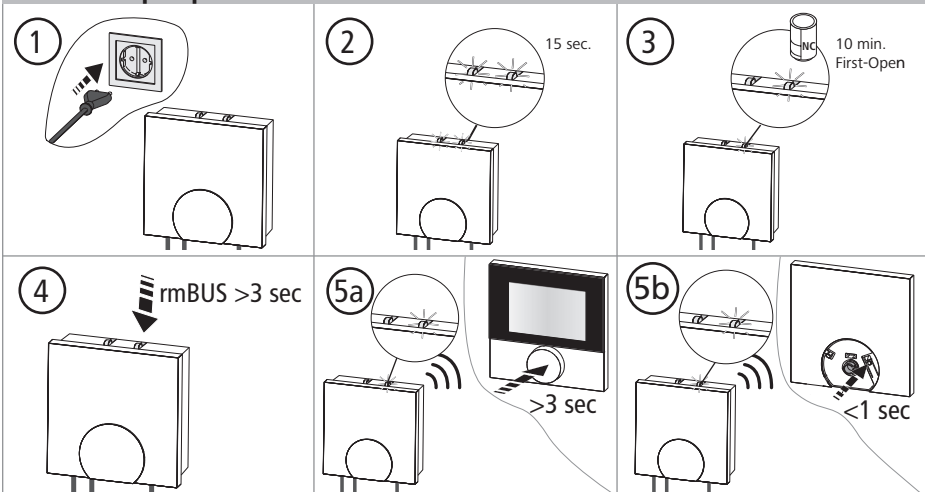
ESP

RSF 64202-00

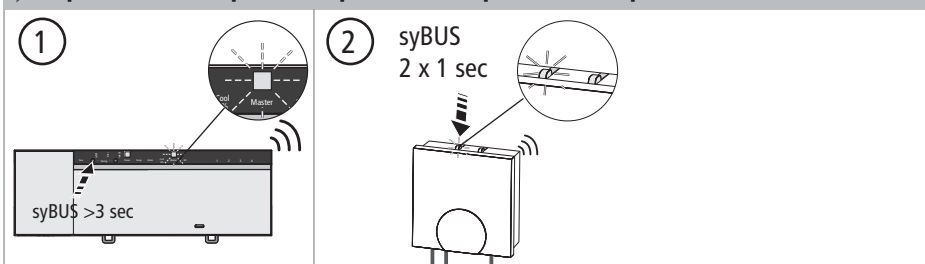




Erstinbetriebnahme / First commissioning / Première mise en Service / Eerste inbedrijfstelling / Prima messa in servizio / Puesta en funcionamiento por primera vez



Optional / En option / Optioneel / Opzionale / Opcional



Bedienungsanleitung / Operating instructions / Mode d'emploi / Operatie instructies / Istruzioni per l'uso / Manual del usuario



www.ezr-home.de

